



4 Salamanca Place, London
SE1

GARTON JONES.COM



4 Salamanca Place, London , SE1

£550 Per Week

A very generously proportioned 1-bedroom apartment offering 749sq.ft (69.6sq.m) available to rent in Salamanca Place, a popular residential development built by Berkeley Homes located set back from the River Thames between Vauxhall Bridge and Lambeth Bridge. This furnished property has a spacious open plan reception room with an integrated kitchen, balcony, a modern bathroom suite, and excellent storage. Salamanca Place is conveniently located with the transport services including rail, tube, and bus links of Vauxhall within walking distance, as are the amenities and popular tourist attractions of both Westminster and the South Bank.

Please note furniture may differ to that shown in the current photos.

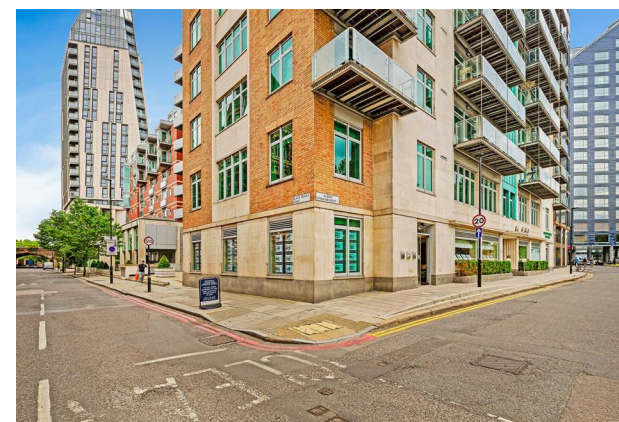
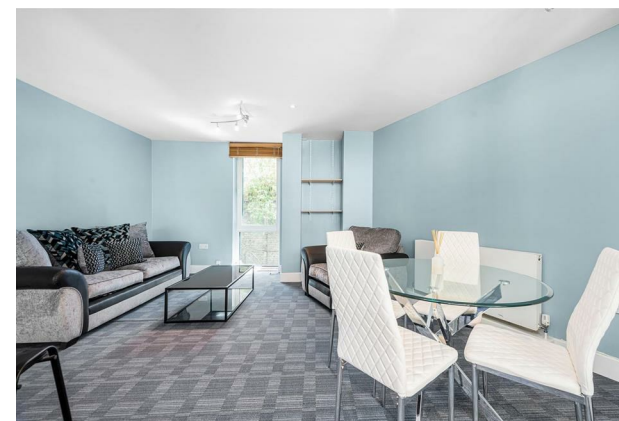
- Electricity Supply — Mains | Water Supply — Mains | Sewerage — Mains | Heating — Central Heating
- Broadband & Mobile Signal : Check Coverage via Ofcom
- Parking: No Parking Included
- Lift Access
- Building Safety: EWS1 Available on Request
- Council Tax Band D (London Borough of Lambeth)
- 5 Week Security Deposit
- Holding deposit equivalent to 1 week of rent
- Rent to be payable monthly in advance
- EPC Rating B (82)

- 1 Bedroom
- 749sq.ft (69.6sq.m)
- Open Plan Reception
- Modern Integrated Kitchen
- Balcony
- Very Generously Proportioned
- Furnished
- Lift
- 0.6 Miles to Vauxhall Station

GARTON JONES.COM

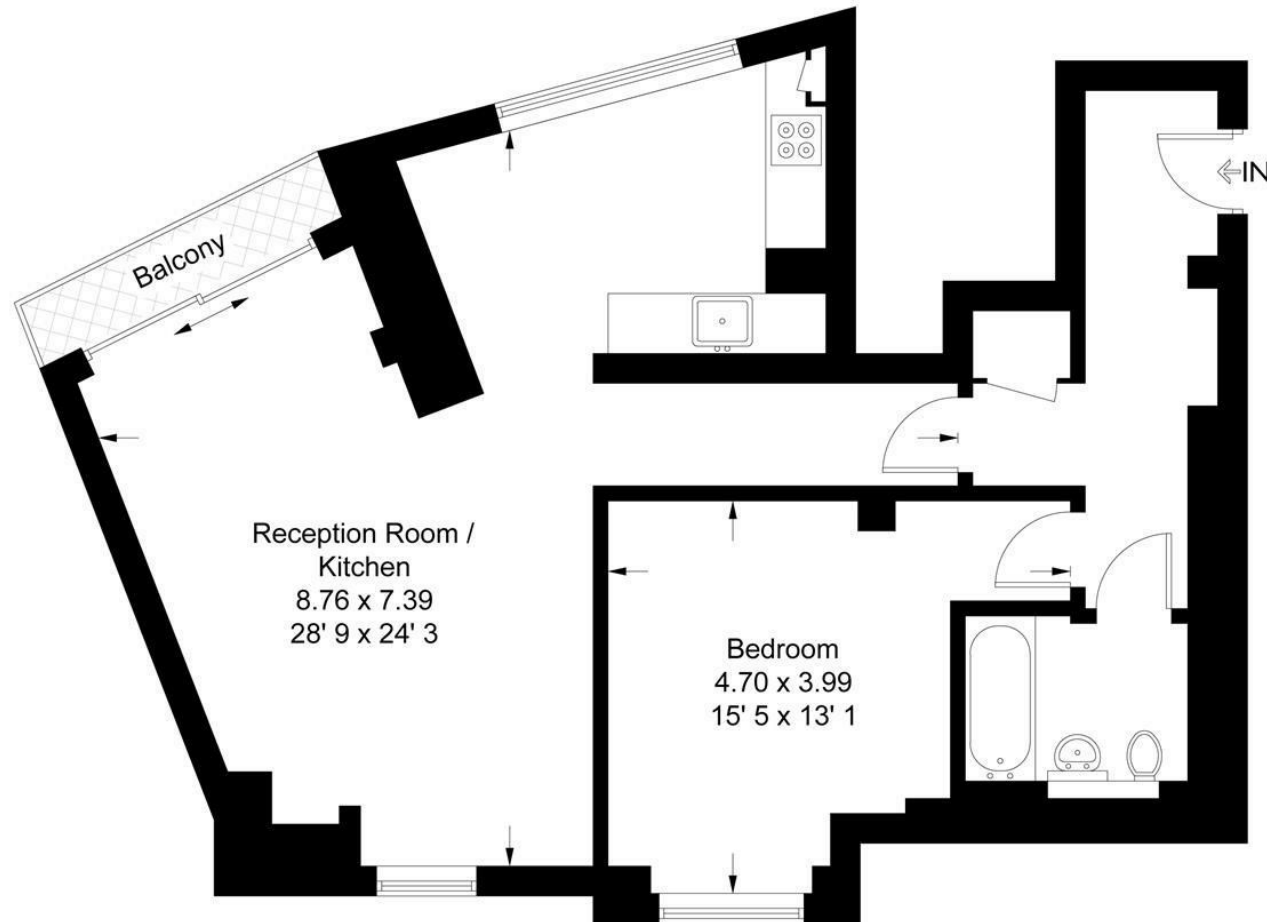
9 Albert
Embankment
London
SE1 7SP

Lettings:
+44 (0) 20 7735 1888
nineelms@gartonjones.com
www.gartonjones.com



Salamanca Tower

Approximate Gross Internal Area = 749 sq ft / 69.6 sq m



Not to scale, for guidance only and must not be relied upon as a statement of fact
All measurements and areas are approximate only and have been prepared in
accordance with the current edition of the RICS Code of Measuring Practice

